

The Sweet Beat



Monthly eNewsletter from Michigan Sugar Company

Mom's Old Fashion Fudge



- Ingredients**
- 2 C Pioneer Sugar
 - 1/4 C Karo® syrup (light or dark)
 - 1/2 C butter (not margarine)
 - 1/2 C milk
 - 2 1/2 T cocoa (semi-sweet)
 - 1 1/2 tsp. vanilla

Directions

In a large kettle add Pioneer Sugar, Karo® syrup, butter, milk, cocoa and vanilla. Bring to a boil over medium heat. When mixture is boiling good, set the timer for 5 minutes; stir constantly. Remove from heat and continue beating with a wooden spoon until thick and dull. Pour into a lightly buttered 8 x 8-inch pan. Chill.

*Cooks note: to speed up the thickening process set kettle in ice cold water and keep stirring.

[For more Great Recipes, click here](#)



Community Calendar



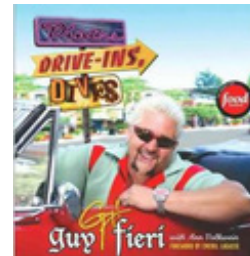
Be sure to check out our Community Calendar on the website to follow our 2010 Michigan Sugar Queen and Court around the state at various events and parades.

The 2011 Michigan Sugar Queen Crowning will be held at the Sugar Festival in Sebewaing on June 17, 2011. The newly crowned queen and court will lead the parade the following day at 10 a.m. Follow this link http://www.emailcontact.com/stat/click.php?nl_id=110446&email=5bEMAIL%5d&url=http%3A%2F%2Fwww.sebewaingchamber.com for more information about the Sebewaing Sugar Festival.

<http://www.sebewaingchamber.com> for more information about the Sebewaing Sugar Festival.

[Click here for the Community Calendar](#)

The Guy Fieri Food Show



The star of Food Network's "Diners, Drive-ins, Dives" and NBC's "Minute to Win it." Guy Fieri will bring his charismatic personality, trademark

bleached blond hair, and culinary talent to Midland's Center for the Arts on May 25, 2011 at 7:30 p.m.

Pioneer Sugar co-sponsors this event as the evening will feature cooking demonstrations, part rock concert, and interactive segments with the audience.

It'll be a show you don't want to miss!

[Click here for ticket information](#)

Real. Sweet!

Previous artificial sweeteners highlighted in our continuing series have been, Acesulfame K, Aspartame (*marketed as NutraSweet, Equal and Sugar Twin brands*), and Neotame. This month we'll describe the sweetener that is widely known; Saccharin.

[Click here for the article](#)

Sweet Savings!



Save NOW on a 5 lb. bag of our pure, natural REAL Pioneer Sugar. Locally Grown. Locally Owned.

[Save NOW on your next bag!](#)



Michigan Sugar Company | 2600 S. Euclid Ave. | Bay City | MI | 48706

TheSweetBeat@MichiganSugar.com | [http://www.emailcontact.com/stat/click.php?nl_id=143609&email=\[EMAIL\]&url=http%3A%2F%2Fwww.PioneerSugar.com](http://www.emailcontact.com/stat/click.php?nl_id=143609&email=[EMAIL]&url=http%3A%2F%2Fwww.PioneerSugar.com)

[Forward to a Friend](#) | [View Online](#) | [Unsubscribe](#)

This email was sent to noreply@www.emailcontact.com.
To ensure delivery, add TheSweetBeat@MichiganSugar.com to your address book or safe list.

Powered By  [Email Contact](#)® - Try it for [FREE](#)